



EQUESTRIAN TRAILS, INC.  
CORRAL 12 - Vista del Valle

APRIL, 2008

P.O. BOX 921022, SYLMAR, CA. 91392



President: Kris Topaz  
(626) 798 - 0198  
kristopaz@sbcglobal.net  
Vice-President: Julie Sexton  
(818) 364-0097  
Treasurer: Patty Hug  
(818) 367-2056  
pattyhug@verizon.net  
Secretary: Diane Riniker  
(818) 362-6700  
riniker@gte.net  
Civic Affairs: Cheri Blose  
(818) 367-0066  
Area 7 Deleg. Dr. Katie Twohy  
(818) 768-5560  
Alt. Del.: Jeanne Gonzalez  
(661) 259-7608  
Juniors: Charleen Klein  
(661) 268-0474  
Dressage: Dana Tonai  
(661) 298-1412  
Been there - done that  
Kris Minzey (818) 767-6372  
Horse Show: Debbie Foster  
(661) 309-7371  
Trail Trials: Patty Hug  
(818) 367-2056

Newsletter articles due the 20th  
of the month to Diane Riniker  
riniker@get.net  
Or mail to:  
P.O. Box 921022  
Sylmar, Ca. 91392

Webmaster: Paul Coleman  
(661) 298 -1412

Corral 12 Website:  
www.corral12.com

*Driving Playday*  
*Sunday, April 20*

Please- repeat after me,  
10 times - it will NOT rain  
on our driving show date, it  
will NOT---etc..

We are so looking forward to  
our driving show this month!  
Katie and Suzanna have had  
lots of calls and interest and  
this may be one of our largest  
driving play days ever. We  
hope so, anyway!. It's defi-  
nitely one of our most fun  
events for spectators to  
watch. There are usually  
quite a few different horse  
breeds pulling the carriages;  
all the way from big draft  
horses to tiny minis. And, if  
you haven't seen Stetson  
Ranch lately, you will be sur-  
prised at all he work that  
Rec. and Parks has done. Of  
course, parking and admis-  
sion is no charge. They only  
thing we charge for is our  
tasty lunch from the cook  
shack. Or, bring a picnic  
basket.

It should be a beautiful  
spring day, we hope you can  
join us.

President's  
Message

Kris  
Topaz

**SPRING HAS SPRUNG**

I hope that you are all enjoy-  
ing the great riding weather!  
Thanks to our great Trail Tri-  
als committee, we had a very  
successful Trail Trial in  
March.

We are gearing up for Con-  
vention already, and looking  
forward to our events  
planned up until then. Start  
looking out for photo oppor-  
tunities, thinking of poster  
themes, and getting your  
items planned for donating to  
the Jr. Ambassadors for the  
silent auction at Convention,  
which is approaching!

If you are a Junior corral  
member and would like per-  
sonal information about the  
Jr. Ambassador program, call  
me as my granddaughter will  
be entering her fourth year  
and she would be happy to  
talk with you. My phone  
number is always on the left  
side of the page.

**Happy Riding All!**

## IMPORTANT

### **CORRAL 12 WILL HAVE A NEW MEETING LOCA- TION FOR THE GENERAL AND BOARD MEETING IN APRIL**

Corral 12 will have a new meeting location for our next general meeting which is on Tuesday, April 8th. We will meet the E11 Office, 13741 Foothill Blvd., in Sylmar., Suite # 100. The closest cross street is Sayre, between Sayre and Hubbard. The E11 Office is located in the set of buildings behind those that front Foothill Blvd. Watch for a narrow driveway that runs between the water store and the coffee shop. Park anywhere in the lot. Our meetings will be at the same time, 7:30 p.m.

Corral 12's board meeting will be held on Tuesday, April 22nd, same location as above, also starting at 7:30 p.m. Everyone is welcome to attend.

The Chamber of Commerce has temporarily moved to Barry Sylvan's real estate office which they will be sharing until a new meeting place becomes available that the Chamber will once again share with Corral 12.

If you have any questions about meeting locations, call Diane at (818) 362-6700.

## COMING EVENTS

\*Mary Kaufman is letting us know about two upcoming events. 1). On Saturday, May 3rd, Chatsworth is celebrating its 5th Annual *Day of the Horse*. It will be held at Ride-On, 21126 Chatsworth St., in Chatsworth. Hours are 11 - 3. Demonstrations (Guinness, the world's largest horse will be there) along with vendors, and lots of fun. Free lunch. Awards will be presented to the winners of the Ari Safety Poster Contest. If you need more information, call Mary at (818) 222-MARY.

Corral 54 has free tickets to the L.A. Jr. Philharmonic Symphony for Sunday, May 4th. Tickets are free as well as the bus ride downtown. This is the "Battle of the Bantons!". Musical repertoire will include Tchaikovsky's *Fourth Symphony*, Rimsky-Korsakov's *Scheherazade*, Bernstein's *Westside Story* and more. For more information, and to reserve your spot contact Charlotte Brodie at (818) 892-3862..

\*P.S. L.J.'s official retirement date was Monday, March 3rd! Hooray!

\*The Compton Jr. Posse Founder and CEO, Mayisha Akbar, is seeking donations for her 501 © Children's Charity. Check out their

website at:  
[www.jrposse.com](http://www.jrposse.com)

Help keep the kids on the horses and off the streets!

### HANSEN DAM STAR PARTY

Brought to you by the Sidewalk Astronomers at Hansen Dam Aquatic Center, on April 11th from 7:30 pm to 9:30 pm. Admission is free. All are welcome. Telescopes available for viewing. Lecture by world renowned astronomer Bob Alborzian. Enter at Dronfield entrance to Hansen Dam Park off Osborne.

[www.sidewalkastronomers.us](http://www.sidewalkastronomers.us)

\*Canyon Creek Farm, a rescue and adoption facility for PMU mares and foals in Acton, California is having an event on Sunday, April 13th, from 11-5 pm., at The Canyon Club, 28912 Roadside Dr., in Agoura Hills. In June, 2005, Tammy Craven and Vikki Dean opened a placement service for horses no longer useful to the pregnant mare's urine (PMU) industry. They originally purchased 63 mares and foals and their farm soon became a sanctuary for the horses they saved.

When the horses arrived, they trained them to prepare for adoption into new homes. Funds received from adoptions were returned to saving more horses. heir website is [canyoncreekfundraiser@gmail.com](mailto:canyoncreekfundraiser@gmail.com).



**E.T.I. CORRAL 12 OF SYLMAR**  
**E.T.I. National High Point Circuit Show**  
**Open Horse Show**  
**Halter, Western & English**  
**Sunday, May 18, 2008 (Rain Date September 7)**  
**Stetson Ranch Equestrian Park, Sylmar**



**Entry Fees:**

- \$12.00 (per class) ETI Member
- \$14.00 Non Members
- \$ 5.00 Drug Fee (per horse)
- \$ 5.00 ETI High Point Fee (per entry)
- \$ 5.00 Grounds Fee (per horse)

**Registration: 7:30am**

**Show Starts: 8:00am**

Information: Debbie Foster  
 Telephone: (661) 309-7371  
 (818) 362-6819

**High Point of the Day English & Western**  
**Special Award to Halter Champion**  
**Awards to 1st. - Ribbons 1st. - 5<sup>th</sup>**

>>>> NO REFUNDS WITHOUT VET CERTIFICATE <<<<<

- 1 Conducted under USEF Rules and ETI High Point Circuit Rules, but Management Rules take precedence.
- 2 Decision of the Judge is final.
- 3 No one under 18 years of age may show a stallion.
- 4 No switching of numbers or horses will be allowed.
- 5 Unsportsmanlike conduct will result in disqualification.
- 6 Abuse of horses will result in disqualification and removal from the show grounds.
- 7 Classes with 3 or less entrants may be cancelled or combined at the discretion of show management.
- 8 Classes with more than 18 riders will be split.
- 9 All mounted Hunt Seat riders must be wearing an USEF/ASTM approved helmet while on the show grounds.
- 10 For High Point of the Day, you must maintain either Western or English attire for all classes.
- 11 **ALL DOGS MUST BE ON LEASH!**

**Symbol Meanings:**

- ◆ Western High Point of The Day Classes
- English High Point of The Day Classes
- ⊙ Can only be in walk trot classes  
i.e. Country Pleasure, walk/trot
- ⊞ May not ride in ANY other classes
- ⊞ May not enter any other Over Fences/Jumping Classes  
fences must be taken at the trot only.
- ‡ May not enter any other Over Fences/Jumping Classes  
fences must be taken at the Canter.
- ⊞ ETI High Point Classes
- X May be asked for registration papers
- ⊙ No Fee-Automatic entry if qualified
- ⊙ 1<sup>st</sup> & 2<sup>nd</sup> Year Green open to green horses in 1<sup>st</sup> or 2<sup>nd</sup> year of showing
- Novice classes open to riders that have not won 3 first Place ribbons per class in the prior year.

~ You may join Equestrian Trails, Inc. at the show ~

**Outstanding FOOD available**  
**Vegetarian MENU too**  
**ON GROUNDS ALL DAY**

**Thank-You for attending our show.**

**Directions: From the 210 freeway take the Roxford exit, turn south (away from the hills), turn right on Foothill, turn right on Glenoaks, then left into Stetson Ranch.**

**JUDGE: Susan Gruber**

1. Halter Mares	⊞	-----	2 & Over
2. Halter Geldings	⊞	-----	2 & Over
3. Halter Stallions	⊞	-----	2 & Over
4. Halter Color	⊞	-----	Open
5. Halter	⊞	-----	Open
6. Halter Champion 1st. & 2nd. Place only	⊙	-----	Closed
7. Showmanship in Hand - English /Western	◆●⊞	-----	12 & Under
8. Showmanship in Hand - English /Western	◆●⊞	-----	13 - 17
9. Showmanship in Hand - English /Western	◆●⊞	-----	18 & Over
10. Leadline - English / Western	⊞⊞	-----	7 & Under
11. Walk Trot - Equitation - English / Western	⊞⊞	-----	10 & Under
12. Walk Trot - Pleasure - English / Western	⊞⊞	-----	10 & Under
13. Walk Trot - Equitation - English / Western	⊞⊞	-----	11-17
14. Walk Trot - Pleasure - English / Western	⊞⊞	-----	11-17
15. Walk Trot - Equitation - English / Western	⊞⊞	-----	18 & Over ATR
16. Walk Trot - Pleasure - English / Western	⊞⊞	-----	18 & Over ATR
17. Country Pleasure (walk/favorite gait) English/Western	◆◆⊞	-----	12 & Under
18. Country Pleasure (walk/favorite gait) English/Western	◆◆⊞	-----	13 - 17
19. Country Pleasure (walk/favorite gait) English/Western	◆◆⊞	-----	18 & Over
20. Western Equitation	◆⊞	-----	12 & Under
21. Western Equitation	◆⊞	-----	13 - 17
22. Western Equitation	◆⊞	-----	18 & Over
23. Western Equitation	◆⊞	-----	Open
24. Western Equitation Novice	⊞	-----	Open
25. Western Pleasure	◆⊞	-----	12 & Under
26. Western Pleasure	◆⊞	-----	13 - 17
27. Western Pleasure	◆⊞	-----	18 & Over
28. Jack Benny Pleasure - English /Western	⊞	-----	39 & Over
29. Western Pleasure	◆⊞	-----	Open
30. Western Pleasure Novice	⊞	-----	Open
31. Western Pleasure 1 <sup>st</sup> & 2 <sup>nd</sup> Year Green	⊞	-----	Open
32. Obedience-Western	◆⊞	-----	Open
33. Reining	◆⊞	-----	Open
34. Trail Horse E/W	◆◆⊞	-----	12 & Under
35. Trail Horse E/W	◆◆⊞	-----	13-17
36. Trail Horse E/W	◆◆⊞	-----	18 & Over
37. Hunt Seat Equitation	◆⊞	-----	12 & Under
38. Hunt Seat Equitation	◆⊞	-----	13 - 17
39. Hunt Seat Equitation	◆⊞	-----	18 & Over
40. Hunt Seat Equitation	⊞	-----	Pony Open
41. Hunt Seat Pleasure	◆⊞	-----	12 & Under
42. Hunt Seat Pleasure	◆⊞	-----	13 - 17
43. Hunt Seat Pleasure	◆⊞	-----	18 & Over
44. Hunt Seat Pleasure	⊞	-----	Pony Open
45. English Equitation Novice	⊞	-----	Open
46. English Pleasure Novice	⊞	-----	Open
47. Obedience - English	◆⊞	-----	Open
48. Hunter Hack 1'6" - 2'3"	◆⊞	-----	Open
49. Trot Cross Rail Equitation 1'6"-2'3"	⊞	-----	Open
50. Trot Cross Rail Hunters 1'6"-2'3"	⊞	-----	Open
51. Cross Rail Equitation 1'6"-2'3"	⊞	-----	Open
52. Cross Rail Hunters 1'6"-2'3"	⊞	-----	Open
53. Equitation Over Fences Pony 1'6"-2'3"	⊞	-----	Open
54. Working Hunters Pony 1'6" - 2'3"	⊞	-----	Open
55. Equitation Over Fences 2' - 2'3"	◆⊞	-----	Open
56. Working Hunters 2' - 2'3"	◆⊞	-----	Open

## Annual Pilgrimage To Sage Hill

*Kris Minzey*

Last February we (Corral 12) made our annual four day pilgrimage to Sage Hill for riding, reading and relaxation. Having never been there myself and only knowing stories about narrow trails with nasty ledges and trails are all up and down hills. OK so if I told you that up until 6:30am on Saturday the morning of our departure I was trying to find a reason to forgo this trip. But if you know Patty Hug, there is no reason short of being on your death bed for missing a camping trip.

Sage Hill is one of nicest camp grounds I have been to. Camper/Motor home parking is easy (if you were not there you missed a great leveling show), horse corrals are very close and the grass, was green and of course the creeks (many many creeks) were full of water. This is not the place to come and ride if your horse absolutely will not

do water crossings. You do have to watch out for the parking bumpers as they will trip you every chance they get, just ask Mary, (As of this writing she has been cleared to ride)

We had a wonderful group of campers, Delmarie, L.J., Jeanne, Patty, Kelli, Irene, Victor P, Tiffanie, Paul, a couple for C-54 and myself. There was a larger than usual pack of dogs, and of course a herd of horses.

For my first ride at Sage Hill Patty wanted me to see the ruins, which is an hour and a half ride up the mountain with part switch backs and part fire break. So Kelli, Irene, Tiffanie, Paul, Patty, Victor and myself enjoyed a wonderful ride with plenty of Oak trees to keep the trail shady. Some of the horses still worked up a sweat. The mountain bikers were all very courteous, there was one biker we saw and talked to and about forty-five minutes later we saw what we thought was his twin. Wrong they start at the top of the mountain ride down where some one picks them up and go back up and start



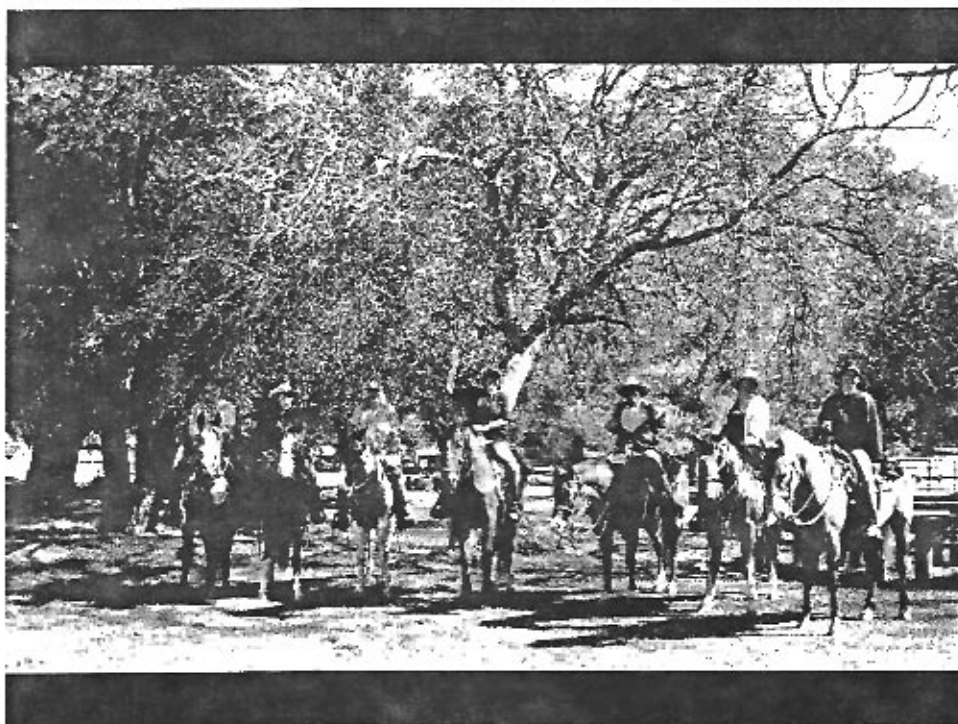
Patty, Tiffanie, Irene,, Kelli, (members of C-54) and Paul, enjoy of game of Dog's Body.

all over again.

Once we reached to top of the mountain I was in total in awe of the view, you could see for miles up and down the valley and I



Riders take a break and enjoy the view at the ruins.



Paul, Tiffanie, Patty H, Kris M, Victor, Kelli, and Irene ready to ride.

was totally amazed there were families there with little kids. Wow; they hiked all the way up there from the Santa Barbara side to see this view. NOT, Tiffanie informed me there was a parking lot just the other side of the road.

After taking our photo ops we headed back to camp for a lazy afternoon of watching the dogs play and chase the ground squirrels.

On Monday, took a short 3 hour ride up the other side of the mountain. On this ride I learned, when you are on a narrow, clifty,

switch back trail which if you are (afraid of heights) to hold your breath, you should sing, you can't sing with out breathing. Paul kept asking Patty " How many bottles of beer are on the wall"

I was a great three days, the pot luck dinners were wonderful as usual, the horses were outstanding, the dogs were the afternoon entertainment and of course the friendships are what makes these trips worth while



### **WHAT'S HAPPENING**

\*5TH annual Theodore Payne Native Plant Garden Tour, Saturday, April 12 and Sunday, April 13th. A 2-day, self-guided journey through 38 L.A. area home gardens, each containing at least 50% Calif. Native plants. Admission \$20./per person.

\*Free native plant lecture "Designing Native Plant Garden", Saturday April 12, 6:30 p.m., Barnsdall Gallery Theatre, 4800 Hollywood Blvd., Hollywood. Tickets and info. At: [www.theodorepayne.org](http://www.theodorepayne.org)

\*Sylmar Woman's Club scholarship fundraiser, luncheon and fashion show. Saturday, May 3rd, Odyssey Restaurant, Granada Hills. Doors open at 10 a.m. Lunch tickets \$30.00.

**Definition of Hobbles:** walking gait of a horse owner after their foot has been stepped on by a horse.

## **CORRAL 12 APRIL TRAIL RIDE VASQUEZ ROCKS COUNTY PARK SATURDAY, APRIL 12, 2008**

*Jeanne Catron-Gonzalez*

*We'll be in the saddle at 10:00 a.m.* This will be a moderately-strenuous 2 - 3 hour ride...depending on how long we stop to admire the flowers. Some trails in Vasquez Rocks are rocky (*go figure*), so you might want to bring hoof protection if your horse isn't used to it.

If it rains a lot in the days leading up to the ride, we'll have to cancel because the trails will be closed. Please call tail boss Jeanne at (661) 259-7608 to confirm that the ride will be on and how many riders will be attending.

Each rider will fill out the standard ETI liability waiver form. A parent or legal guarding must sign the waiver form for any rider under 18 years old. Riders who are not current ETI members must fill out both a waiver and a single-event membership form and pay a fee of \$5.00 (individual) or \$7.00 (family).

### **DIRECTIONS:**

From Interstate 5 take the 14 Freeway East about 16 miles and exit at the Agua Dulce Canyon Road off ramp. Turn left and go about two miles, following the road signs to the park. At about the 1.6 mile point there is a sharp 90 degree right turn. Continue east past the stop sign about 1/4 mile to the park entrance. Turn right into the park...this'll be almost a U-turn. At the foot of the paved driveway, make a sharp left turn through the inactive pass gate and follow the dirt road for about 1/2 mile, over the little hill and between the large rocks to the parking areas. Park in the last lot. There are rest-rooms nearby.

**BEAR VALLEY SPRINGS  
CAMPING TRIP  
FRIDAY 5/23 - MONDAY, 5/26**

Check-in / Check-out Time: Noon

\_\_\_\_\_  
Names of everyone in your party

Bear Valley Springs is a gated community. Before you can enter, Corral 12 must be sure that the front guard gate has the names of everyone in your party who will be driving into the campground.

ADDRESS \_\_\_\_\_

NIGHTS YOU WILL BE STAYING: \_\_\_\_\_

=====

**FEES:**

*\$10.00 PER PERSON, PER NIGHT; OR, \$10.00 PER HORSE, PER NIGHT, WHICHEVER IS GREATER.*

*CHILDREN UNDER 15 YEARS OF AGE ARE NO Charge  
\$10.00 PER HORSE FOR DAY RIDES.*

*PLUS: submit a separate check for \$25.00 for a cleaning deposit ( which will be returned to you if your campsite, corrals, and dog's poop are cleaned up when you check out.*

*# OF PERSONS \_\_\_\_\_ # OF HORSES \_\_\_\_\_  
# OF NIGHTS \_\_\_\_\_*

*TOTAL:\$ \_\_\_\_\_*

Please make your check payable to: ETI Corral 12

Your check must be included with your reservation form, by May 17

Mail to: Diane Riniker, 13632 Fenton Ave., Sylmar, Ca. 91342

-----

*Reservations forms and checks are due by Saturday, 5/17  
Pot luck menus, campground rules & equine vaccination form will be mailed after we receive your reservation*

*Dogs must be leashed at all times and cleaned up after.*

*Proof of current equine vaccine REQUIRED.*

**CORRAL 12 TRAIL TRIALS RESULTS. 3/16/08**

**PATTY HUG**

**OPEN DIVISION**

COMPETITOR	HORSE	POINTS	CORRAL #
1. Tama Lockwood	Dusty	9	12 / 20
2. Terry Kaiser	Rambo	11	12 / 20
3. Leena Fleetwood	Champagne's Fizz	11	---
4. Jeann Chadsey	Buster Brown	16.5	35
5. Tammie Wagner	Lillie	16.5	65
6. Tiffanie Bailey	Logan	18	22
7. Pat Wolfe	Sienna	19	MAL
8. Vickie Wommack	Gino	20	MAL

**NOVICE DIVISION**

1. Margo Amer	Blue	10	10
2. Jamie Webber	Reno	11.5	--
3. Kimberly Dwight	Indy	11.5	12
4. Susan Kaiser	Shanti	16.5	20
5. Julie Fibble	Gambler	17	36 / 63
6. Linda Jones	Sammy	19.5	20
7. Pamela Fay	Red	19.5	--
8. Gail Boland	Nacona	20	35
9. Pam Miller	Kisses	21	10
10. L. J. Pope	Amigo	22	12

**QUALIFIED FOR END OF YEAR BUT NO RIBBON**

11. Kim Snyder	Raven	22.5	54
12. Leslie Sutton	Shasta	23.5	--
13. Stephanie Fay	Keyp	25	---
14. Marissa Gehlay	Ranger	26	--
15. Chelsey Frost	Fargo	29.5	38

**JUNIOR DIVISION**

1. Halie Klein	Sandy	20.5	12
2. Emily Patterson	Harry	21	37 / 118
3. Catie Tehee	JR	33	12
4. Meg McNamara	JR	42	69



*Winners of  
Open Div.  
And Junior  
Division  
Tama Lockwood  
and  
Halie Klein*



*Sabrina & Ryan Rinehart, Halie & Wesley Klein*

☆☆☆☆☆☆☆☆☆☆☆☆☆☆☆☆☆☆☆☆☆☆☆☆☆☆☆☆☆☆  
**Trail Trials Review** ☆☆☆

Patty Hug ☆☆☆

If you decided the weather was too iffy for a day out on the trails, you missed a great day. The committee was burning up the phones worrying about the weather all week, but decided it was a go on Sunday morning. The 42 riders enjoyed a great day in the sun with green grass and lots of flowers, and no wind. The Saturday flaggers did not fare as well as we got just a little wet during one cloud-burst, but we did miss all the hail that fell on our homes. ☆☆☆

I want to thank our committee; Jeanne Gonzalez, Kris Minzey and Kelli Land for all the work they did riding the trails, spending a hot day of trail trimming, flagging, making maps, judges, score sheets, entry, and arranging access to all our trails for the judges. ☆☆☆

A big thanks goes to all our workers. We ask for help and do we got it! Our judges were Kelly O'Connor, Gil Gonzalez, Katie Twoby, Julie Sexton, Debbie Davis, Mary Kaufman, Patty Munson, Jeanne Gonzalez, Leah Blöse, Kelli Land with Karen Poly and "Rain" her carriage horse. Our workers included Kris Minzey, Diane Riniker, Karen Gordon, Charleen, Halie and Wesley Klein, Dana Tonai, Paul, Rhiannon, Donovan and Emrys Coleman, Kelly R. and kids Sabrina and Ryan, Paulette Ackerman, Jim Renze, Walt Conner, Delmarie Carver, Jeanne Currier, Kris Topaz, Amanda Ramirez, Leslie Boyle, Jane Geyer, Rochelle, Erin R., Terry Kaiser, Bev and Jim Thornton and Catie Tehee. Congrats to Open Winner Tama Lockwood on her 28 year old horse, "Dusty", Novice, Margo Amer. and Junior, Halie Klein on "Sugar". Special thanks to Karen Gordon for making the delicious chili! ☆☆☆

**MEMBERSHIP**

Patty Hug

Join early, or on time, so you will not miss anything. ETI uses your anniversary date you joined, even if you let your membership lapse. **Associate dues are for joining Corral 12 if you are already a full member in a different corral. You must have paid dues somewhere else and wish to belong to Corral12 to get our information and newsletter.**

**Expirations**

**February, 2008**

Geyer Family  
Geyer /Flicker Family  
Bill Gordon Family  
Lil Judd  
Manuel Reynaga  
Kathy Simons

**March, 2008**

Laura Dictz  
Krall Family  
Merville Family (Associate)  
Salmon Family

**April, 2008**

Alexander Family  
Juran Family  
Mary Anne Kodis  
Kelli Land  
Steve Lacola

**May, 2008**

Klein Family  
Irene Scott

E.T.I. CORRAL 17  
PO BOX 921022  
SILMAR CA 91392



4100



PAUL/DANA TONAI COLEMAN  
16222 PINEVIEW RD  
SANTA CLARITA CA  
91387 9/07

CALENDAR, APRIL, 2008

9138784052 R006



- April 8 General Meeting, 7:30 PM  
ETI Office
- April 12 Trail Ride, Vasquez Rocks
- April 20 Driving Play Day  
Stetson Ranch, Sylmar
- April 22 Board Meeting, 7:30 PM  
ETI Office
- May 18 Horse Show, Stetson Ranch
- May 23-26 Camping, Bear Valley Springs



Halie and Catie on their "Bunnies"?

**10% OFF COUPON EAST VALLEY 10% OFF COUPON**

11788 SHELDON ST  
SANTA VALLEY, CA  
91378-7677 FAX

**FEED & TACK**

JOX DRY SADDLES, TACK, VITAMINS, HORNGRE, BLANKETS, FLEECING  
 & WIPERS, VACCINES, HEALTH CARE & PEST CONTROL, BAGGAGE,  
 PET SUPPLIES, BOOKS, JEWELRY, CHAIRS, TANKS, ISOLATE, MATS,  
 ROPE, PLANTS & TREES, NURSERY SUPPLIES

ISSUED BY E.T.I. CORRAL 12 SYLMAR

CUSTOMER NAME \_\_\_\_\_